

V-Series ELECTRONIC CABINET LOCK

The V-Series 1300V is a compact electronic lock ideal for replacing keyed cam locks commonly supplied on a wide range of lockers, cabinets and carts.

The versatile V-Series is ideal for securing medical carts, cabinets, drawers, and lockers across a variety of industry applications- including healthcare, education, sports & entertainment, and business.



Easy to
install



On-the-door
programming



Two-year
guarantee



Private and
Public functions

FEATURES

- 11 button keypad
- 8 digit Master and Sub-Master Code
- 4 digit User Code
- 6 digit Technician Code
- Horizontal Left-hand, Right-hand and vertical configurations available
- Up to 15,000 operations from 2x AAA batteries (supplied)
- Battery override
- Slam latch accessory-sold separately
- IP55 rated when fitted with gasket-sold separately
- All parts/hardware/templates included
- Silver gray or black models available
- Treated with a clear ISO-certified photocatalytic coating*



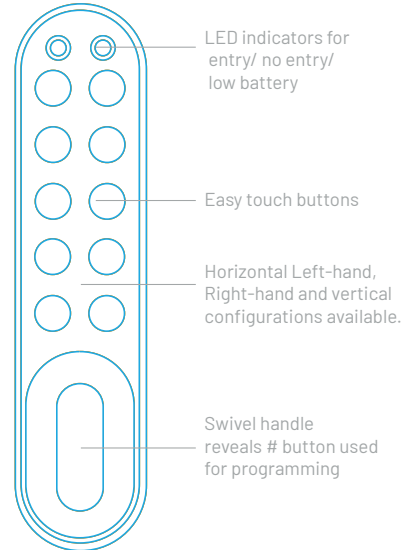
FUNCTIONS



Private Function:
This is the default function and is already pre-programmed in new locks. This function is used where the same code will be repeatedly used, e.g. clinical staff accessing the same medical cart.



Public Function:
In this function the V-Series 1300V operates with a single User Code. The user enters a personal four digit code, this locks the lock. The same code is entered once only to open the lock before automatically being erased and ready for the next user. This function is used for short term, multiple occupancy applications, e.g. cabinets for patients' personal belongings.



PRODUCT DIMENSIONS



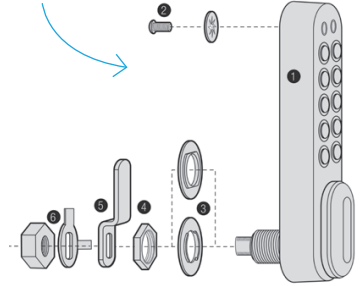
Code Management:
V-Series 1300V has four code levels available:

- 8 digit Master Code
- 8 digit Sub-Master Code
- 4 digit User Code
- 6 digit Technician Code

The V-Series 1300V is supplied with two factory set codes:

- Master Code
- User Code

Easy Installation:
Everything you need is included to ensure a quick and simple installation



TECHNICAL SPECIFICATIONS

FEATURE	DESCRIPTION
Operations	Up to 15,000 opening per 2 x AAA batteries.
Battery Override	A 9V battery can be placed against external contacts.
Low Battery Warning	Red LED will flash on opening to indicate low battery.
Functions	Private and Public.
Buttons	11 individual round buttons.
Material	Zinc Alloy.
Finish Color	Silver grey or black.
Door Thickness	Ready to fit doors up to 25mm (1").
Memory	Non-volatile memory will be retained.
Fitting	Easy to install and program.
Fitting Options	Vertical, right hand and left hand models.
IP55 Rated	When used with rubber gasket (sold separately).
Slam Latch	Enables easy shutting. Sold separately to fit new or existing V-Series locks.

Note: Not suitable for chlorine environments.

**Products have been treated with the LumaClean™ Multipurpose Photocatalytic Coating manufactured by USA Nanocoat "The Manufacturer." All test results, certifications and claims are those applied for or of the Manufacturer. The finish should not be considered a replacement for an overall cleaning and disinfection strategy. No claim is made or implied that the finish provides infallible protection against agents that may be harmful in part or whole to humans or animals.*

Scan to learn more



Corporate Office
One Security Drive
Nicholasville, Kentucky 40356
Phone (859) 885-9411
Toll-Free (800) 826-7652
sargentandgreenleaf.com